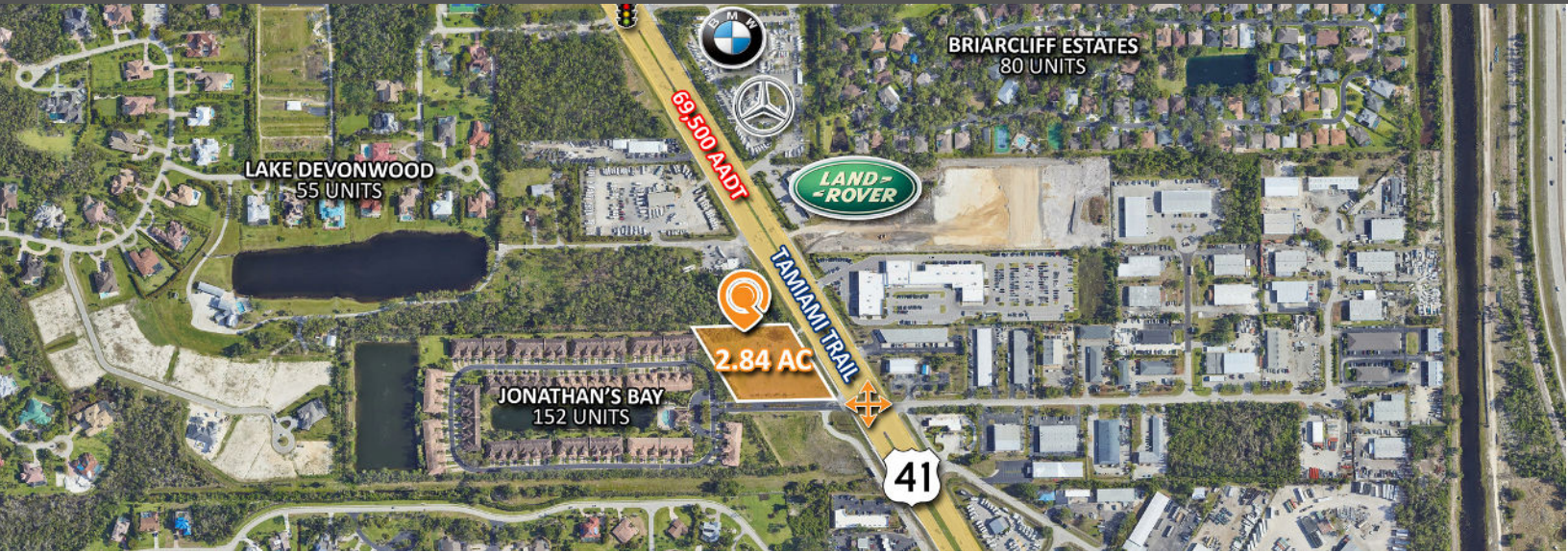


US-41 FRONTAGE | COMMERCIAL LAND

6081 Jonathans Bay Drive | Fort Myers, FL 33908

2.84 AC Land For Sale



CALL FOR
PRICE



2.84 ACRES
SIZE



PUD
ZONING

- 2.84 AC commercial site for sale in Fort Myers, FL
- US-41 frontage (69,500 VPD)
- All due diligence has been completed
- Zoned PUD (Planned Unit Development)
- Utilities available on-site
- Site is rough graded



PROPERTIES.LQCRE.COM/JONATHANS-BAY



5-MI POPULATION
119,856



2025 MEDIAN AGE
50.4



5-MI AVG INCOME
\$114,245

EXTEND YOUR REACH WITH PAUL'S PORTFOLIO, MARKET UPDATES, EXPERT INSIGHT & MORE

[VIEW MORE LISTINGS](#)

[CONNECT ON LINKEDIN](#)

[VISIT PAUL'S WEBSITE](#)

[SUBSCRIBE ON YOUTUBE](#)



5440 Mariner St #112
Tampa, FL 33609
LQCRE.COM

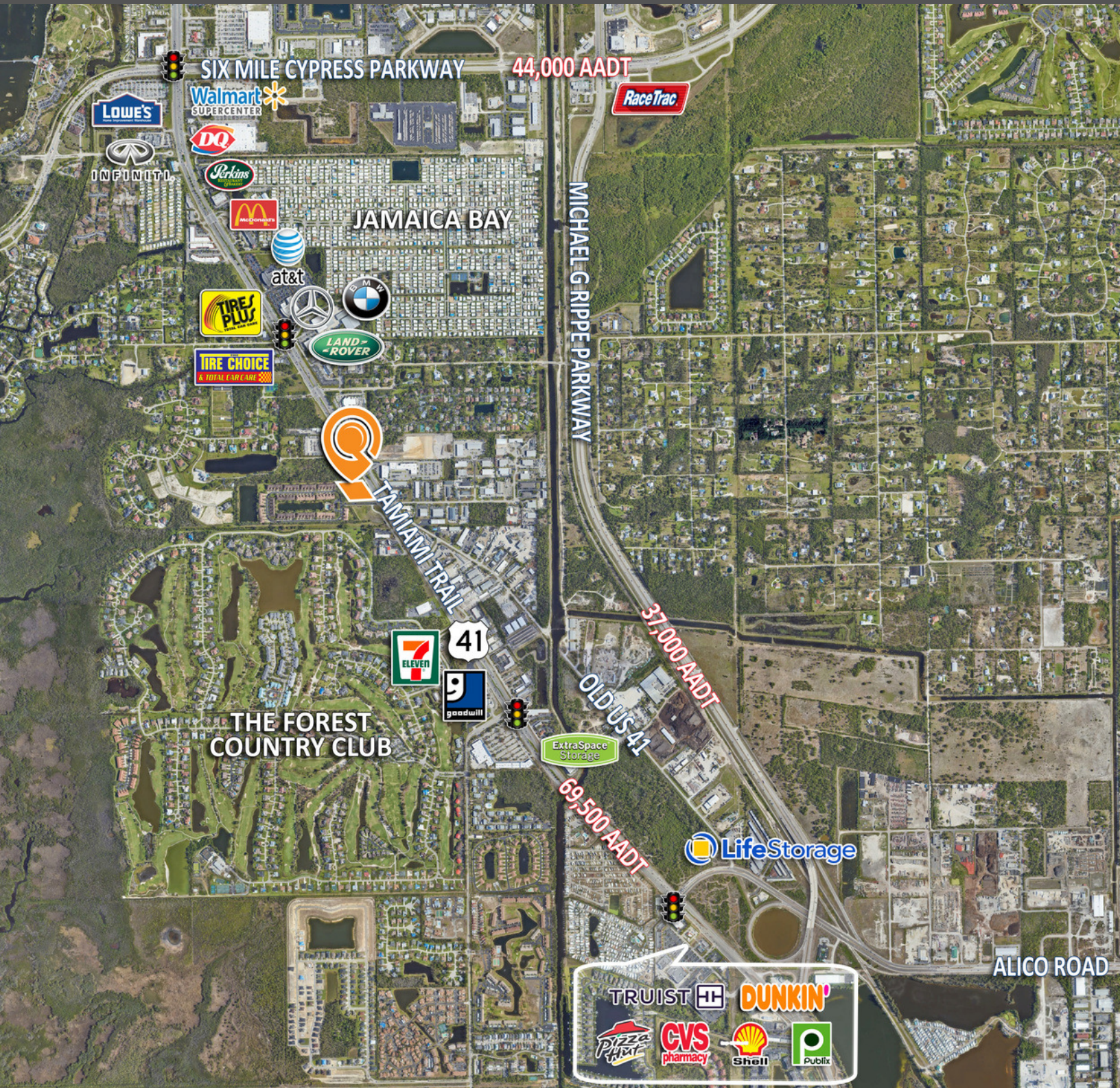
Paul Rutledge
Senior Broker Associate
D: 813.999.1942
C: 941.228.2198
prutledge@lqcre.com

Zachary Ellis
Associate
D: 813.540.3320
C: 813.493.3437
zellis@lqcre.com

US-41 FRONTAGE | COMMERCIAL LAND

6081 Jonathans Bay Drive | Fort Myers, FL 33908

2.84 AC Land For Sale



 **LQ Commercial**
REAL ESTATE SERVICES
5440 Mariner St #112
Tampa, FL 33609
LQCRE.COM

Paul Rutledge
Senior Broker Associate
D: 813.999.1942
C: 941.228.2198
prutledge@lqcre.com

Zachary Ellis
Associate
D: 813.540.3320
C: 813.493.3437
zellis@lqcre.com