

3006 Martha Berry Hwy.

ROME, GA

3006 Martha Berry Highway, ROME, GA



EXCELLENT ACCESS TO MAJOR HIGHWAYS



HIGH VISIBILITY & TRAFFIC COUNTS



.94 ACRES SHARED ACCESS WITH EXISTING RACETRAC

- Prime 3.38 AC commercial land located at the intersection of Interstate 475 and Thomaston Rd.
- Excellent visibility with direct access to a major regional highway corridor
- High traffic counts driven by commuter and regional travel patterns
- Strong accessibility with immediate proximity to the interstate on/off ramps



[View Property On Extended Reach USA](#)



5-MILE POPULATION
49,797



LABOR FORCE
26,227



DAILY VEHICLE TRAFFIC
65,400 VPD



Extended Reach Marketing Specialists



PAUL RUTLEDGE
D: (813) 999-1942
C: (941) 228-2198
prutledge@lqcre.com



ZACH ELLIS
D: (813) 540-3320
C: (813) 493-3437
zellis@lqcre.com

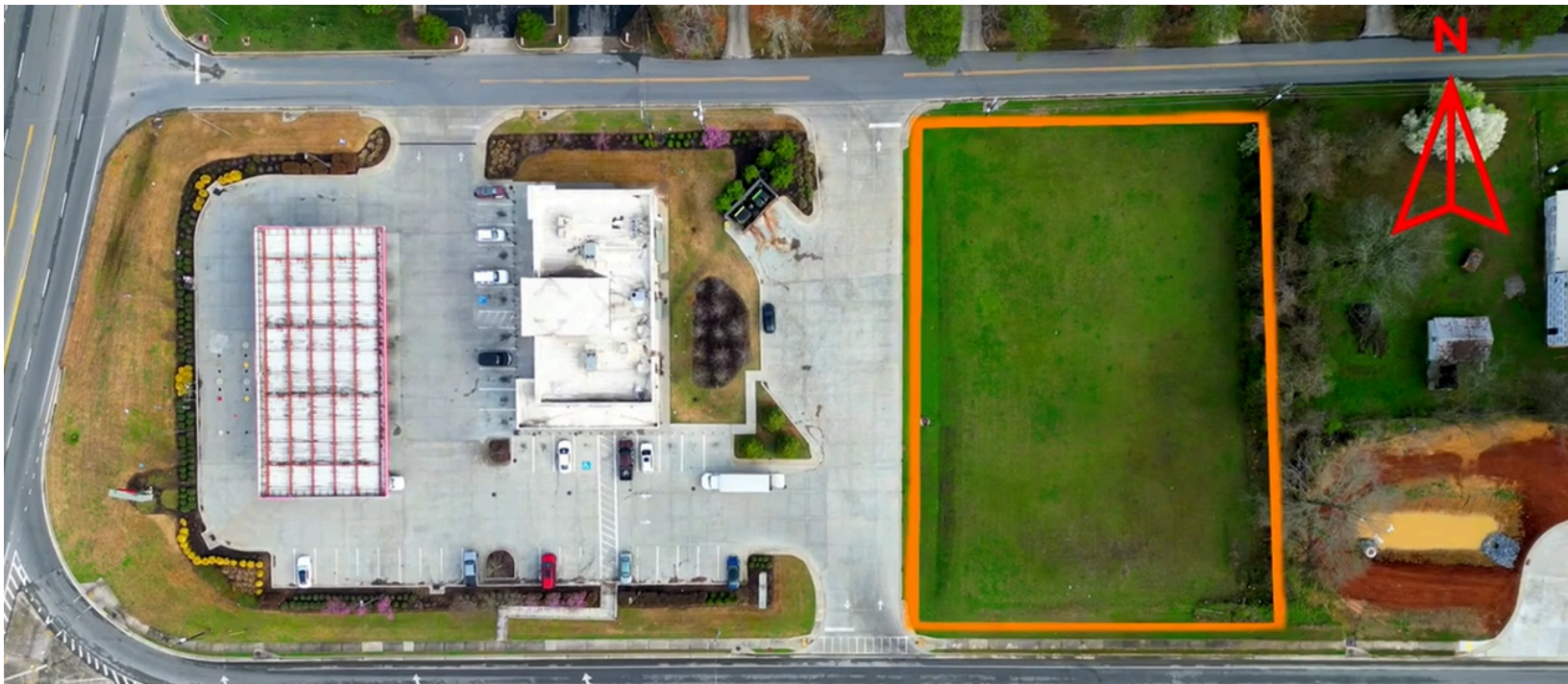
ZAX REI LLC | 109 17TH ST NE, ATLANTA, GA 30309



I-475 Thomaston Road

MACON, GA

5370 Thomaston Rd, GA 31206 & 5334 Thomaston Rd, GA 31206



SURROUNDING RETAIL CORRIDOR



Publix Anchored Shopping Center
.5 Mile



5- MI Median Age
34.4



5-Mile Avg HH Income
\$87,786



Extended Reach

Marketing Specialists



PAUL RUTLEDGE
D: (813) 999-1942
C: (941) 228-2198
prutledge@lqcre.com



ZACH ELLIS
D: (813) 540-3320
C: (813) 493-3437
zellis@lqcre.com

ZAX REI LLC | 109 17TH ST NE, ATLANTA, GA 30309

