

US-19 DEVELOPMENT | TAMPA MSA

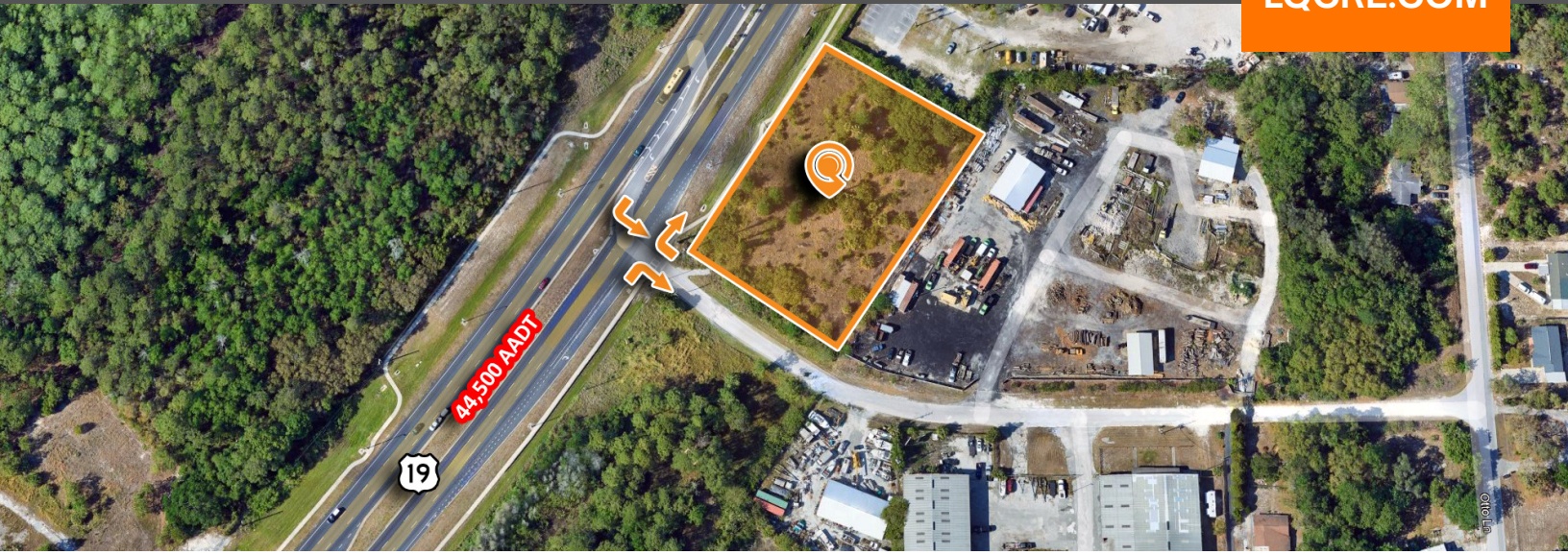
17128 U.S. 19 | Hudson, FL 34667

1.4 Acres | 44,500 Daily Traffic | Development Ready



LQ Commercial
REAL ESTATE SERVICES

LQCRE.COM



CALL FOR
PRICE



1.4 ACRES
SIZE



C2
ZONING

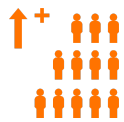
- 1.4 AC development located off US-19 for sale in Pasco County
- Primary north-south thoroughfare
- High traffic count (44,500 VPD)- Ingress/egress
- C2 Zoning allows for multiple uses
- Growing population base (1.0%) and consumer market
- Minutes from residential neighborhoods (26K+ households) and waterfront communities



PROPERTIES.LQCRE.COM/HUDSON19



5-MILE POPULATION
59,047



5-YR POP. INCREASE
1.0%



5-MILE AVG INCOME
\$79,729



5440 Mariner St #112
Tampa, FL 33609
LQCRE.COM

Paul Rutledge
Senior Broker Associate
D: 813.999.1942
C: 941.228.2198
prutledge@lqcre.com

Zachary Ellis
Associate
D: 813.540.3320
C: 813.493.3437
zellis@lqcre.com

US-19 DEVELOPMENT | TAMPA MSA

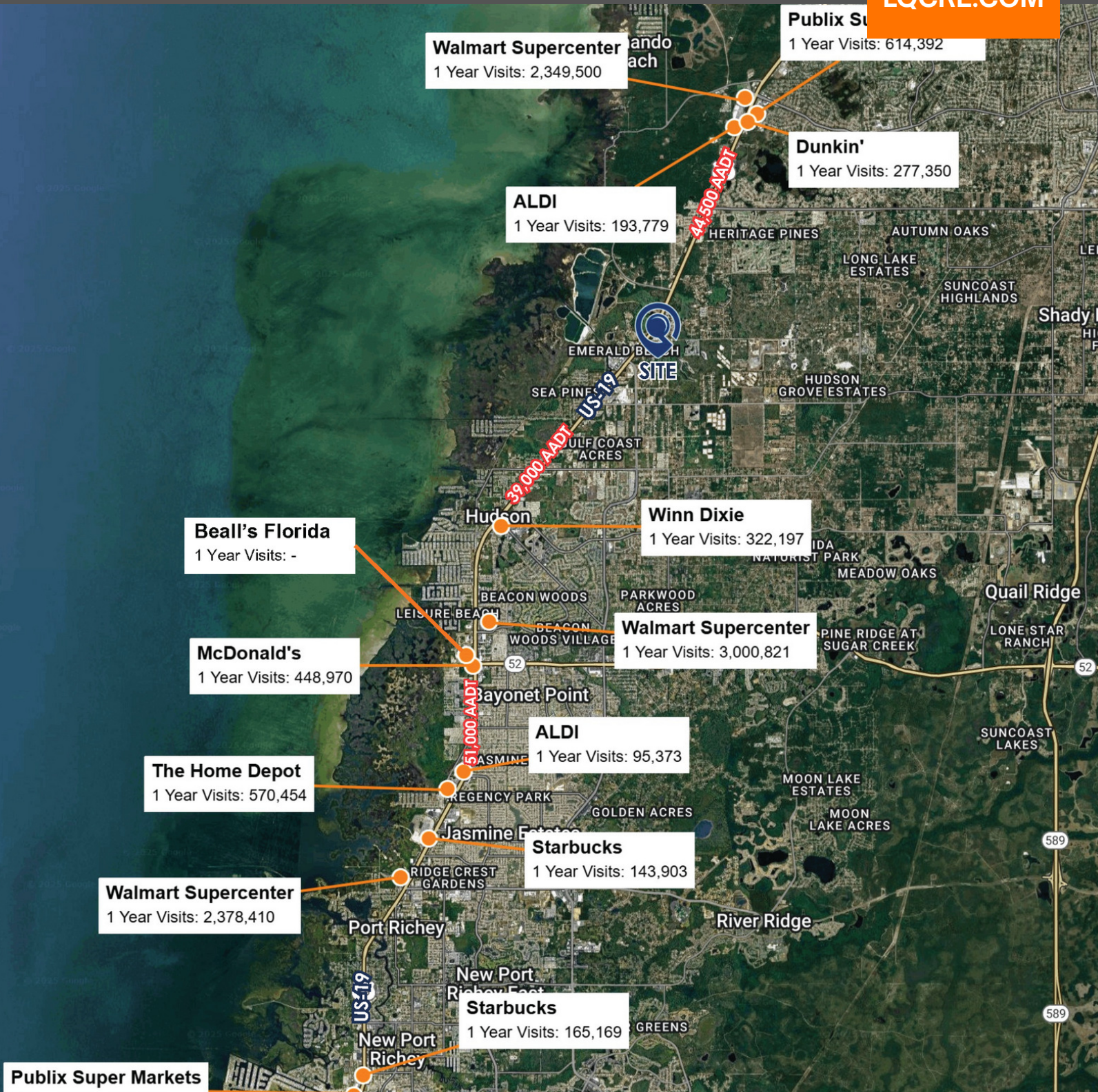
17128 U.S. 19 | Hudson, FL 34667

1.4 Acres | 44,500 Daily Traffic | Development Ready



LQ Commercial
REAL ESTATE SERVICES

LQCRE.COM



 **LQ Commercial**
REAL ESTATE SERVICES
5440 Mariner St #112
Tampa, FL 33609
LQCRE.COM

Paul Rutledge
Senior Broker Associate
D: 813.999.1942
C: 941.228.2198
prutledge@lqcre.com

Zachary Ellis
Associate
D: 813.540.3320
C: 813.493.3437
zellis@lqcre.com